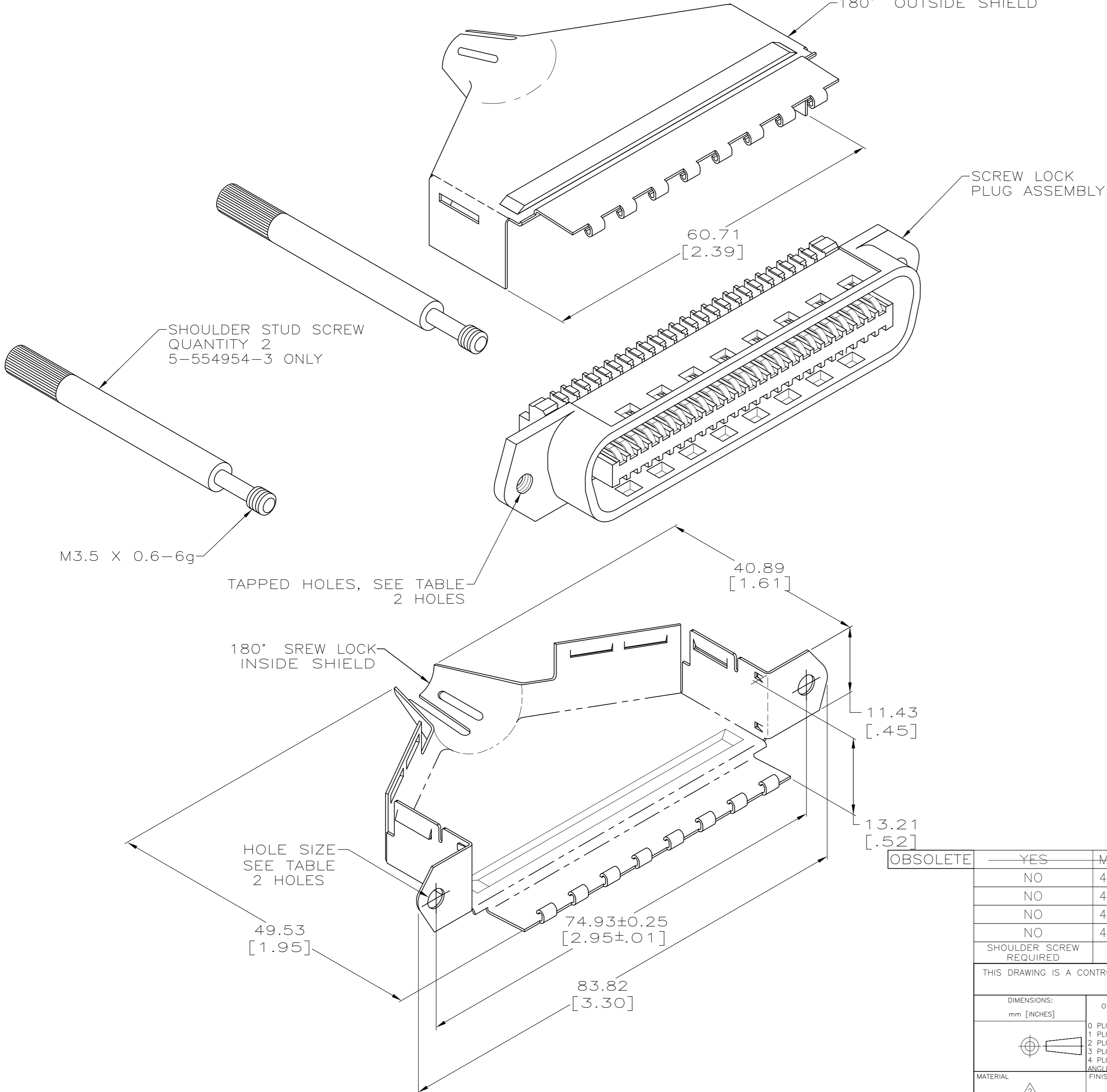


THIS DRAWING IS UNPUBLISHED. RELEASED FOR PUBLICATION  
 © COPYRIGHT BY TYCO ELECTRONICS CORPORATION. ALL RIGHTS RESERVED.

LOC	DIST	REVISIONS					
GP	00	P	LTR	DESCRIPTION	DATE	DWN	APVD
		J		REVISED PER ECO-08-007327	05SEP08	BM	WM



1. THIS KIT SHIPPED NOT ASSEMBLED.
2. MATERIAL: SHIELDS - BRIGHT NICKEL PLATED CARBON STEEL.  
 PLUG HOUSING - POLYPHENYLENE OXIDE, BLACK.  
 TERMINAL - HIGH STRENGTH COPPER ALLOY PLATED WITH 0.76µm [.000030] MIN GOLD OR GOLD FLASH OVER PALLADIUM NICKEL PLATE, 0.76µm [.000030] MIN TOTAL ON MATING SURFACE. 1.27µm [.000050] MIN NICKEL UNDERPLATE OVER ENTIRE TERMINAL.
3. WIRE SIZE: 26-27-28 AWG 7 STRANDS OF COPPER CONDUCTORS. MAXIMUM INSULATION DIAMETER OF 1.14 [.045] IS ACCEPTABLE FOR MOST APPLICATIONS.
4. CABLE RANGE: Ø8.89-15.88 [.350-.625].
5. CENTER-TO-CENTER SPACING OF TERMINALS 2.16 [.085] NOMINAL.
6. WIRE SIZE: 24 OR 26 AWG SOLID OR 24 AWG 7 STRANDS OF COPPER CONDUCTORS. MAXIMUM INSULATION DIAMETER OF 1.14 [.045] IS ACCEPTABLE FOR MOST APPLICATIONS.
7. DIMENSIONS ARE MAXIMUM UNLESS OTHERWISE SPECIFIED.
8. PACKAGED 1 KIT PER POLYBAG.
9. BULK PACKAGED 500 KITS PER CONTAINER.

OBSOLETE	YES	M3.5x0.6-6G	3.56-3.81 [.140-.150]	9	E	3	5-554954-3
	NO	4-40 UNC-2B	3.18-3.43 [.125-.135]	9	B	6	5-554954-2
	NO	4-40 UNC-2B	3.18-3.43 [.125-.135]	9	E	3	5-554954-1
	NO	4-40 UNC-2B	3.18-3.43 [.125-.135]	8	B	6	554954-2
	NO	4-40 UNC-2B	3.18-3.43 [.125-.135]	8	E	3	554954-1
SHOULDER SCREW REQUIRED	TAPPED	HOLE SIZE DIAMETER	PACKAGED	SLOT SIZE	WIRE SIZE	PART NUMBER	
THIS DRAWING IS A CONTROLLED DOCUMENT.		DWN T. CANTY 11-APR-86	Tyco Electronics Corporation Harrisburg, PA 17105-3608		NAME		
DIMENSIONS: mm [INCHES]		CHK B. FOX 19-MAY-86	Tyco Electronics		PRODUCT SPEC		
TOLERANCES UNLESS OTHERWISE SPECIFIED:		APVD B. HUTCHENS 27-MAY-86	Tyco Electronics		APPLICATION SPEC		
0 PLC ± -	1 PLC ± -	NAME		SIZE	CAGE CODE	DRAWING NO	RESTRICTED TO
2 PLC ± -	3 PLC ± -	PLUG KIT, 50 POSITION, SCREW LOCK, WITH 4-40 HOLES, SHIELDED CHAMP		WEIGHT	A2	00779	—
4 PLC ± -	ANGLES ± -	MATERIAL		SCALE	2:1	SHEET	1 of 1
FINISH		CUSTOMER DRAWING		REV	J		

554954